



MONTHLY MEMBERSHIP PROGRESS REPORT

District 14 M

Results as of: 06/30/2018

GMT: CINDY GREGG

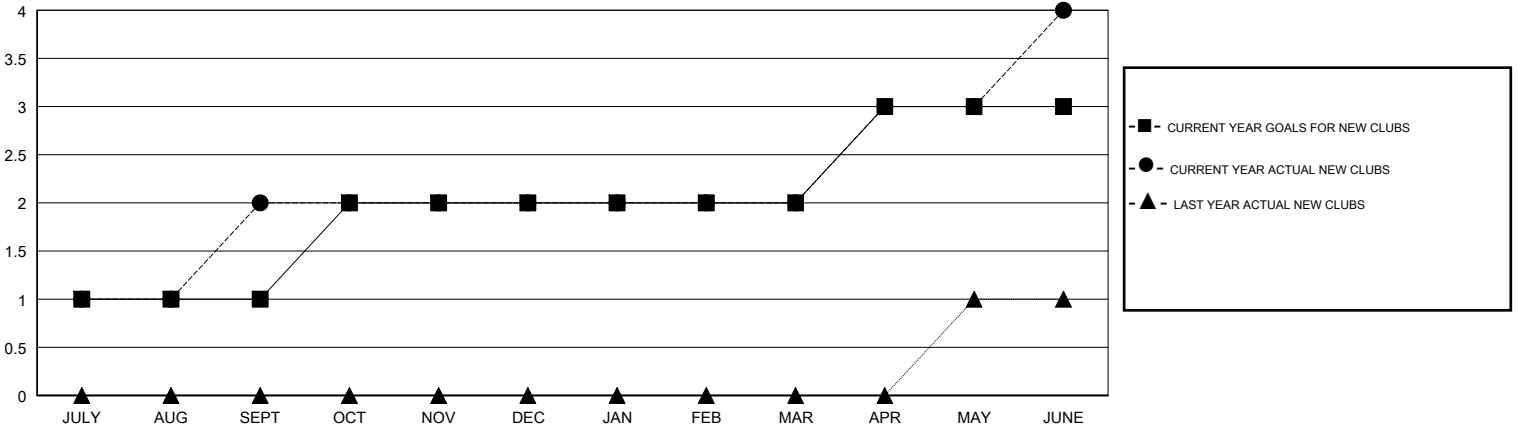
LOCATION PENNSYLVANIA

GMT CA

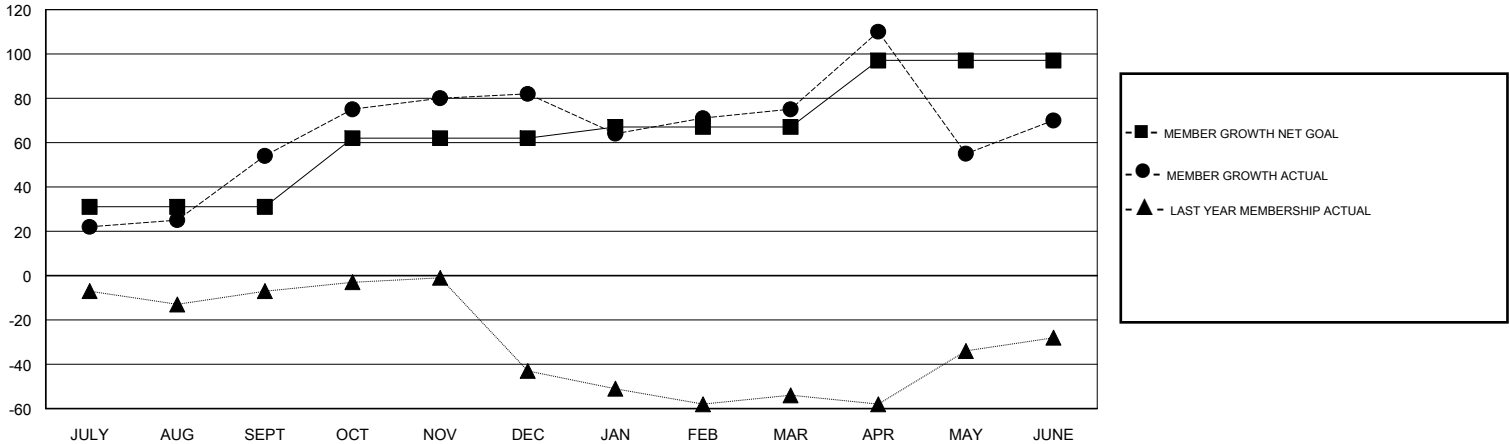
Clubs			
RESULTS FOR 2017-2018			
QUARTER	NEW CLUB GOAL	NEW CLUBS	DROPPED CLUBS
JULY/AUG/SEPT	1	2	0
OCT/NOV/DEC	1	0	0
JAN/FEB/MAR	0	0	0
APR/MAY/JUNE	1	2	1

Members			
RESULTS FOR 2017-2018			
QUARTER	MEMBER GROWTH NET GOAL	MEMBER GROWTH ACTUAL	DROPPED MEMBERS ACTUAL (including transfers)
JULY/AUG/SEPT	31	81	23
OCT/NOV/DEC	31	51	22
JAN/FEB/MAR	5	46	48
APR/MAY/JUNE	30	93	96

GOALS AND ACTUAL NEW CLUBS CUMULATIVE



GOALS AND ACTUAL MEMBERS CUMULATIVE



DROPPED CLUBS: 1	32 CLUBS OF 48 ADDED 1 OR MORE NEW MEMBERS	<u>GENDER DISTRIBUTION</u>	
		MALE	817 (69.71%)
		FEMALE	355 (30.29%)
		Women Percentage Fiscal Year Goal: 28%	
<u>DROPPED MEMBERS</u>		TOTAL FAMILY UNIT MEMBERS	0
DECEASED	19	FAMILY MEMBERS PAYING HALF DUES	0
CLUB CANCELLED	1		
OTHER	169		
TOTAL	189		

[CLICK HERE FOR CUMULATIVE MEMBERSHIP DATA](#)